

# The Friary School

## PROSPECTUS



The Friary School

High achievement through challenge and support for every learner

# Y6 Open Evening

**Tuesday 30th September 2025**  
**From 6pm**



# The Friary School

## PROSPECTUS BOOKLET

### School Aims:

The Friary School's mission statement calls for: "High achievement through challenge and support for every learner" and this objective is a focal point of everyday school life.

In addition we have 'The Friary Ethic' which sets out the six most important priorities for everyone at the school. These are tied into student presentations, assemblies, special events and were voted for by students and staff:

- \* FRRIENDSHIP
- \* RESPONSIBILITY
- \* INDEPENDENCE
- \* ASPIRATION
- \* RESILIENCE
- \* YOU

### Letter from the Headteacher

Welcome to The Friary and thank you for considering our school for your child's next step in life. We understand the importance of the decision you are about to make and we invite you to look around and learn about all that we offer to enable your child to be successful.

Over the last ten years, we are a school that has gone from strength to strength. We can boast about; strong exam results; topping league tables; students at elite universities and in top apprenticeships; but these are only a part

Of course, academic success is important, firm behaviour expectations too, but we are a school that does not forget a child still deserves a childhood. Consequently, for every Oxford University place we are equally thrilled by a Jaguar Land Rover apprenticeship or a placement with a partnered local employer. Likewise, for every sanction there has to be a reward; House Colours in a Celebration Assembly, an award for effort at Prize-Giving Evening, or just laughter on a mammoth inflatable on Rewards Day. Equally, with the austerity and formality of a final exam, there must be the WOW-factor of a practical task, a 'got-it' moment at Saturday School, or the excitement of waking up on the first morning of an overseas residential.

We chase every grade, we expect our teachers to go all out for their classes, but we make sure that the hard graft is matched by fun and energy. We currently top the Performance Tables for Staffordshire but you won't see us waxing lyrical about our brilliance; instead, we see it as one success which has to be repeated. Our teaching is passionate and committed - but we can improve; our site is rejuvenated - but it can still improve; our track record is established - but we know where it needs to improve.

You would expect us to say good things about the school - which Headteacher wouldn't - so we just wish you could come along and see it. We wish you could feel the buzz and see we are not writing a load of flannel. We love being part of our school's story and we hope we can give you enough reason to join us. All our children matter, your child will matter, so take in all you can and see if we fit with what you are seeking.

Matt Allman and Mark Drury, Headteachers of The Friary School



School Name	Founded
The Friary	1892
School Motto	
'Inservi Deo et Laetare' 'Serve God and Be Cheerful'	
Headteacher	
Matt Allman	
Chair of Governors	
Jane Mackenzie	
Website	
<a href="http://www.friaryschool.co.uk">www.friaryschool.co.uk</a>	



## School Life Brainstorm

There are a million-and-one things to tell you about daily life at The Friary but if we describe it all here you will be reading for weeks and weeks.

Instead, here is a quick brainstorm of all the exciting venues, events, principles and themes that you can look out for with us:



THE FRIARY (LEARNING) FRAMEWORK... **FOCUS WEEKS**... HOUSE SYSTEM ... **DUKE OF EDINBURGH**... FINE DINING... **MULTI-GYM**... PRIMARY SCHOOL TRANSITION PROGRAMMES... **UNIVERSITY VISITS**... SATURDAY SCHOOL... **SPECIAL NEEDS SUPPORT**... UCAS GUIDANCE... **ONLINE LEARNING**... DANCE STUDIO... **THEATRE**... RAISING ASPIRATIONS PROGRAMME... **SPORTS HALL**... SIXTH FORM STUDY CENTRE... **SUMMER SIZZLER**... RAG MEETINGS... **ORCHESTRAL TOURS**... PROM... **AWARDS EVENINGS**... ECO- SCHOOL... **NATIONAL CITIZENSHIP SCHEME**... DEBATING... SCHOOL CHOIR... **GYMNASTICS**... PHOTOGRAPHY... **BOOK CLUB**... SKIING TRIP... **SWIMMING POOL**... ICT FACILITIES... **ACE MEETINGS**... LIBRARY... **MASTERCHEF**... STEM... **SATURDAY SCHOOL**... APRENTICESHIP SCHEME... **LEARNING HUB**... SPORTS TEAMS... **ASTROTURF**... JAZZ CLUB... **INTERNATIONAL STUDENTS**... SCHOOL SHOWS... ARABIAN NIGHTS... **CHARACTER AWARDS**... CHARITY FUND-RAISERS... **CAREERS ADVICE**... UNIVERSITY PARTNERSHIPS... **MENTORING SUPPORT**... COMMUNITY PROJECTS... **BATTLE OF THE BANDS**... SCHOOL TRIPS - HOME & ABROAD... **POTTERY**... REWARDS SCHEME... **CATHEDRAL LINKS**... OXBRIDGE ACCESS SUPPORT... **HOUSE / SCHOOL COUNCILS**... ACCELERATED READING... **LAMDA**... HOMEWORK CLUBS... **PTFA**... AND MUCH, MUCH MORE...

## OFSTED Report (March 2024):

The Friary School was last visited by OFSTED in March 2024 and was judged to still be a 'GOOD' school from our last inspection in 2017.



Regrettably for us, this was not an inspection where our former grade could change because we felt our exceptional exam results, high levels of attendance and behaviour, numerous curriculum awards, and wonderful students, talented staff and supportive families put us in good stead for the top judgement. Alas, it could not happen.

Even so, key comments included:

- "Pupils thrive at The Friary School, and it is easy to see why."
- "A culture of high expectations permeates throughout, and pupils rise to the bar willingly."
- "Pupils behaviour and conduct are excellent."
- "Parents and carers are overwhelmingly positive about the school."
- "The wider development of pupils is exceptionally strong."
- "The school's curriculum is highly ambitious."

# KEY INFORMATION

## Admissions

In September 2025 the school will have 210 places available and applications should be made online at [www.staffordshire.gov.uk/admissions](http://www.staffordshire.gov.uk/admissions) or by phone to 0300 1111 8007

## The School Day

The school runs with a 5 period day which allows us to deliver 27hrs 30mins teaching per week. The school days operates to the following schedule:

8.40 – 8.45	Bell/ Transition Time
8.45 - 9.10	Tutor Time
9.10 - 10.10	Period 1
10.10 - 11.10	Period 2
11.10 - 11.35	Break
11.35 - 12.35	Period 3
12.35 - 1.10	Lunch
1.10 - 2.10	Period 4
2.10 - 3.10	Period 5
3.10 - 4.30	Enrichment

We run a 2-week timetable (Week A & Week B) as this allows us to fit more into our curriculum and our enrichment period brings a wide range of clubs and activities for all ages throughout the school year.

## The Student Handbook

Every student is provided with their own handbook and this is a central pillar for school information, personal planning, homework and home-school communication.

## School Uniform

All students are expected to wear full school uniform at all times and to demonstrate pride in their appearance. This includes the controlling of jewellery and extreme hairstyles.

We are fortunate that parents are very supportive in maintaining uniform and, whilst teenagers can try to push the boundaries, we are able to hold a firm and consistent line with our parents behind us.

## Behaviour

We operate a strong system of rewards and sanctions which helps us to maintain high standards of behaviour at school. It works well because it sets out clear expectations and boundaries, and offers a wide range of rewards for those who deliver.

Equally, the system succeeds because our parents support us in what we do; whether that be celebrating with their child as they receive certificates, reward trips or prom vouchers; or talking things through at home when they get comments in their planners, reports or detentions.

## Attendance

We cannot help your child to succeed if they are not in school so we have a minimum expectation that every student will be in school at least 95% of the time.

There are occasions when children are not in a position to come to school, and we look to support you at this time. Even so, we use a mixture of rewards, targets and tutor mentoring to make sure your child meets their 95% target.

Equally, we set clear standards on punctuality and again offer a mix of rewards and sanctions to maintain standards.

## Safeguarding

The school's Lead Safeguarding Officer is Mrs Lottie Hearn (Deputy Headteacher) and the Deputy Safeguarding Leads are Michelle Simpson (Assistant Headteacher) Steve Neale (Hub Support) and Deb Wykes (Student Support Team).

The school takes its safeguarding responsibilities very seriously, ensures we train our staff to a high level and liaises with outside agencies to make sure our students are kept safe.

Our strong provision is maintained by an annual external review to keep us up-to-date and on our toes.

## **Curriculum**

The school provides a broad and balanced curriculum that thoroughly prepares every student for their exams and life outside of education.

Key Stage Three (11-14) sees a focus on English & Maths but includes learning skills programme, a modern foreign language, traditional academic subjects, and practical subjects including Science, Sport, Design, New Technologies and Performing Arts.

Key Stage Four (14-16) sees a pathway approach designed to steer all students of differing abilities to fulfil their potential. This ranges from Triple Science to withdrawal support, and Masterclasses to high-quality vocational courses.

## **Sixth Form**

The school has an excellent Sixth Form housed in a recently re-furnished Sixth Form Study Centre. The curriculum offers a mixture of A-Level and Level 3 BTEC courses which steer students to university, higher-level apprenticeships or gainful employment.

In addition, Sixth Formers benefit from an extensive enrichment programme which includes Extended Projects, Sports Leaders, Duke of Edinburgh Awards, Young Enterprise, LAMDA, Oxbridge Scheme and much more.

## **Aspirations**

Every school says they want students to aim high and hit those heights. However, our school informs students every single step of the way and through our wide-ranging Raising Aspirations Programme we seek to avoid hoping for a success, but rather making a success.

This may involve targeted careers talks, parent events, mock job interviews, university trips, apprenticeship programmes or external mentors. Every support is given every time.

## **Personal Guidance**

We have a full Personal, Social & Health Education programme which runs via tutors and 'drop-down-days' and covers a wide

range of themes ranging from enterprise to sex education, decision-making to self-awareness, healthy choices to careers.

In addition, we have a Focus Week programme for tutorials and assemblies which brings fun and imagination to school life. Recent years have seen bush-tucker trials, pedalling for smoothies, fairground attractions, peace competitions for tablets and European face-painting !

## **Extra-Curricular**

We recognise the crucial importance of academic success at school but also seek to capture that primary feeling of: "You'll never guess what I did at school today".

Extra-curricular clubs are in abundance at the school and we seek to ensure that every student has the chance to develop their own unique areas to shine. It could be one of the numerous sporting teams, or on the stage of a school show, or in a band or orchestra. It could be computer programming, or being a student leader, or a charity fund-raiser. It could be sailing, an expedition on a different continent, or ploughing through a Flanders trench, or admiring a Gaudi masterpiece in Barcelona.

Flying high in exam results is vital, but so is flying high in life.

## **Local Community**

Our school prides itself for being at the heart of the local community and we run numerous events to tie into our special city. This could be a fund-raiser for House local charities, carol singing, a service at the cathedral or work with local businesses.

It is the norm to see our city inside our school: from the Rotary's Interact Club to local businesses, from mock job interviews to local university reps, and local primary schools to community support teams.



## **The Friary Framework**

The school operates a clear and consistent system for learning that means your child will enjoy high-quality lessons and a clear learning structure every step of the way.

This package is backed by top-level academic research, is externally verified and is supported by a full training programme so that teaching standards consistently improve in all subject areas. It includes a Plan-Do-Review Cycle which carefully checks that students understand their learning and a student-friendly marking system which tells them how to improve their work.

## **Homework**

We believe that homework is an important part of making sure that students understand their classroom learning, as well as a great opportunity to independently broaden their knowledge and expertise after-school.

Our homework is tailored to support all abilities and is backed up by online materials after-school homework clubs, study support and Saturday School.

## **Saturday School**

We open our doors for our free Saturday School (regular Saturday morning for targeted exam and coursework groups, as well as for general study and homework projects.

The sessions are run in non-school uniform, include refreshments, and at the busiest times see over 100 students voluntarily in school at the weekend boosting their grades.

## **Parent Communication**

Naturally, parents receive formal reports from the school about their child's progress, but we prioritise a genuine dialogue by working face-to-face to 'make' your child succeed.

These meetings run throughout the year and will provide access to class teachers, tutors, pastoral staff, senior staff and governors. There are also regular emails and our EduLink package gives you daily updates on your child.

## **Student Support**

We have a dedicated team working to support your child on every step of their journey through The Friary.

This team offer a wide range of back-up; ranging from medical care to organisational support and personal education to 1-to-1 mentoring.

Beyond this team, we have the Learning Hub which is a specialist facility targeted at supporting KS4 students in successfully negotiating their GCSEs and provides the personalised support which allows every student to thrive.

## **Special Educational Needs & Disabilities (SEND)**

Every student with specific learning needs benefits from our Class Support Plan package which ensures that each lesson offers them personalised support which is tailored to their individual needs.

This in-class support is backed up by Teaching Assistants, withdrawal programmes for literacy and numeracy, and social and emotional workshops to support day-to-day dealings with others.

The SENCO at the school is Lucy Eagland and she can be contacted via school reception.

## **Student Leadership**

The school values the voice of its students and works hard to ensure that they have a genuine say in the development of the school.

Consequently, we have dedicated House Councils which filter into a whole-school Student Council. On top of this structure we have a Sixth Form Leadership Team which includes a Head Boy and Head Girl. Elsewhere, we have charity, sport and anti-bullying reps.

Not only do these student leaders voice their ideas for school improvement but the system also develops skills in decision-making, team-building and assertiveness.

## Exam Results Summer 2025

This year we have seen that our exceptional results have survived the pandemic challenges, and though there is always room to improve, there was much to celebrate, and tears were of happiness rather than of despair.

### Exam Results - Headline Measurements

We headed into Summer 2025 off the back of incredible results in Summer 2024. We have seen them go up year-on-year for a good while but it did seem that perhaps we might be facing up to the ceiling this time around.

However, though we do not get DfE formal approval on them until late Autumn, we know we have achieved our very best yet. Our English, Maths and Science saw fantastic results and all other subjects brought lots of success stories. Equally, we maintained the important trait of ensuring students of all abilities and backgrounds did superbly well. No child is left behind here and this is reflected in our results.

Similarly, things went wonderfully well in our Sixth Form with most students being able to secure places at their 'first choice' of university. Results day was a real celebration of their dedication and hard work. We were equally delighted with the stunning apprenticeships some of our students secured with employers in the legal, surveying, auditing and accounting sectors.

We put these successes down to our curriculum which is so broad that there is a real choice for every child. Our cohorts typically have around 1 in 4 coming from a Disadvantaged background, around 12% have special educational needs / disabilities (SEND), so we get a real, comprehensive mix but, whether a child is struggling with reading or is an academic high-flier, we are hugely effective to getting everyone to their very best and beyond. If children and families buy in then we make that the youngster thrives and we do all we can to make their future a happy and exiting one.

### Exam Results - Performance Tables

We are not huge fans of Performance Tables as the data they present does not have a full context and often favours schools with particular catchments.

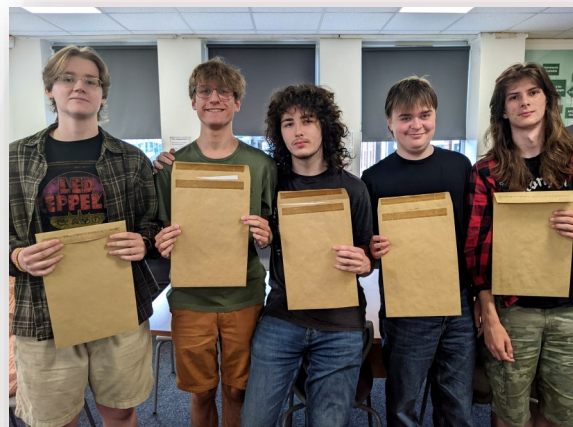
Even so, it is a consistent source of data and you can check it to ensure we are being honest in what we say. We also don't mind you looking as we have topped the tables for GCSE-level results since 2019. Likewise, our Sixth Form results are well up there too!

Simply go to Google and type 'Compare Staffordshire Schools'. Next, click on the top link and choose the 'Secondary Performance' and '16-18 Performance' options.

We certainly don't claim to have everything spot on, but we are always focused on getting closer to doing so.



**All smiles for Y11s whose hard work paid off come Results Day.**



**Excited about going to university - just as impressive elsewhere were some stunning apprenticeships.**



# LOOK OUT FOR...

## House System...

Many years ago The Friary School operated with a House system and we have brought this idea back to bring more energy, competition and fun into school life.

Our students voted on the new House names and came up with famous people attached to Lichfield: Darwin, Garrick, Johnson and Seward. They then went on to decide House colours, House leadership roles, House trophies and House charities.

All students are placed in a House group and benefit from the same Head of House throughout their time at the school meaning parents have a consistent contact. The Houses play a central part in competitions, rewards, rivalries and special events. Even so, not all assemblies are House ones and not all classes are taught in House groups, especially as students move up the school.

The House system proved to be fantastic fun and has quickly become an integral part of school life and as we head into its second year there is only more to come. If you join our school then you will very much be signing up for the House system ride.



## The Friary Ethic...

We wanted to convey a simple message to everyone - students, staff and parents - on exactly what was important at our school: what we considered to be the crucial values that everyone should seek to deliver on a day-to-day basis. This would then become our 'Friary Ethic'.

Students and staff were presented with different ideas and a vote was held across the school and we came up with our FRIARY values. These are writ large around the school site, in planners, in assemblies and in tutor times. They are what we all hold dear and what we seek to model in all we do.

If you join our school then we would ask you to buy into our Ethic.



**SEND facilities are purpose-built to meet the specific needs of our students.**

## Leaving No Student Behind...

The Friary School takes great pride in seeking to address the needs of every student - whether they be an academic flyer or a student struggling with literacy and numeracy.

One example is our SEND facilities which were designed in-house so that they provide the specific learning facilities to raise standards for our students with Special Educational Needs & Disabilities and it is open for homework and support clubs.

Additionally, the facilities are available for lunch-times for students who feel more nervous amidst the hustle-and-bustle of daily school life.



# LOOK OUT FOR...

## Sixth Form

Our Sixth Form already remains a popular choice and is a real strength which compares very well with other local providers. This year will see a further extension of the Raising Aspirations programme - not (like many others) just talking Oxbridge - but rather all post-18 routes whether it be Cambridge (with our Oxbridge support work), Derby or a Higher-Level Apprenticeship.

Additionally, our varied extra-curricular programme now includes partnership work with the PTFA and local businesses and the Saturday School provision is increasingly plotting in Sixth Form support to tally with the new mix of academic and vocational routes.



**Our state-of-the-art  
Sixth Form Centre is open from  
8.00am-4.30pm daily.**



## Learning to Learn

All Year 7 students will benefit from a Learning to Learn programme when they join the school. We have a specific way of structuring lessons called 'The Friary Framework' (see website) and we recognise that students learn better if they understand where the teacher is coming from in terms of their delivery.

This includes our Plan-Do-Review (PDR) Cycle, our marking and assessment system, and our approach to questioning. Learning at secondary level is different to primary level and, just like when you step into any new job or field, you need to have the training and guidance to fit in and succeed.

## After-School & Extra-Curricular Provision

The Friary School has a superb track record in extra-curricular and after-school learning - whether it be regular success in regional and national sporting competitions, or stunning shows and recitals in school and even overseas.

This provision includes Saturday School and as well as after school revision and booster classes. In addition our special Elite Performers scheme (see website) is available for students performing at national level.

Our 3.10pm finish - was partly set up to allow extra-curricular activities to flourish when there is pressure on the school curriculum to solely focus on academic pursuits. We have no less focus on learning and exams, but we will not countenance pulling out of the activities that make a more rounded child. This year our programme will be extended by More Able Clubs, extended library opening hours, SEND Homework Clubs and more. Our website is updated termly with the extra-curricular clubs available.



# LOOKING AHEAD...

## DIY SOS Tribute Act

In recent years, our academy status has seen us receive over £3million of extra site investment - amongst the very highest level in the country.

You will walk around the school and see an environment that stands out against other local providers as being well-maintained, well cared for, and within a mind-set of constant improvement.

Within the last three years we have refurbished our Sports Hall and Art rooms, improved IT provision in the Library, refurbished our theatre, fully re-wired the school, installed 'green' lighting, improved on-site security, rejuvenated classrooms, and have a new Sports Hall roof! Of course, we are never finished - when we complete the school, we'll just start all over again !



**Fully refurbished Sports Hall, ready for students to get active!**

Talk to the students and staff to get their take on our work. The message will come through loud and clear that we know a fantastic working environment makes it easier to go out and achieve fantastic results.

## Curriculum Development



Our curriculum remains very fluid - especially with the DfE changing Key Stage Four and Sixth Form courses and requirements on a regular basis - but we are retaining a curriculum model which maintains the strong academic traditions of the school, but also provides a wide range of vocational pathways to support all students in wholly fulfilling their potential.

This will always include courses in the major growth sectors in the UK economy including creative technologies, design, social care and business management.

Further down the school, we focus on our learning skills programme to enhance study skills and personal organisation so that students well-prepped as they enter their exam courses in later years.

## Academy Status

In September 2023 The Friary School joined the Primitas Learning Partnership.

The Primitas team bring together The Friary School, Erasmus Darwin Academy, Queen's Croft Special School, and a collection of local primary schools including Henry Chadwick Primary School in Hill Ridware. Together we form a trust which prioritises team-work to retain each school's unique flavour.

The Trust gives the schools the opportunity to share best practice, enhance finances and combine the best of our individual offers so that every child can thrive.



**The Primitas Learning Partnership sees local schools joining in to support whilst retaining their own emphasis**



# APPLYING FOR A PLACE AT THE FRIARY

## Applying as a New Year 7

If you are applying to start as a Year 7 at the beginning of the academic year then all applications must go through the Local Education Authority (LEA).

The main application process is done online at [www.staffordshire.gov.uk/admissions](http://www.staffordshire.gov.uk/admissions) or they can be spoken to by phone on 0300 111 8007.

Historically, The Friary School has accepted students from a wide range of primary schools and several of these have been outside of the direct catchment area of the school; for example in recent years, new Year 7 students have arrived from the following:

- |  |  |                                      |
|--|--|--------------------------------------|
| * Chadsmead, Lichfield                       | * Chancel, Rugeley                     | * Chase Academy, Cannock             |
| * Chase View, Rugeley                        | * Christchurch, Lichfield              | * Etchinghill, Rugeley               |
| * Abbots Bromley School                      | * Gentleshaw, Rugeley                  | * Greysbrooke, Shenstone             |
| * Hayes Meadow, Armitage                     | * Henry Chadwick, Hill Ridware         | * Highclare School, Birmingham       |
| * Hob Hill, Rugeley                          | * Lichfield Cathedral School           | * Little Aston Primary School        |
| * Western Springs, Rugeley                   | * St Joseph's, Rugeley                 | * Redbrook Hayes, Rugeley            |
| * Scotch Orchard, Lichfield                  | * St Peter & Paul's, Lichfield         | * St Chad's, Lichfield               |
| * St James', Longdon                         | * St Joseph's, Lichfield               | * St Mary's, Colton                  |
| * St Mary's The Mount, Walsall               | * St Michael's, Lichfield              | * St Peter's, Stonnall               |
| * St Stephen's, Fradley                      | * The Croft, Armitage                  | * John Bamford, Rugeley              |
| * Four Oaks Primary School, Sutton Coldfield | * Mere Green Primary, Sutton Coldfield | * Whittington Community, Whittington |
| * Willows, Lichfield                         |  |                                      |

## Applying Mid-Year or as a New Year 8-11

If you are applying for any other age group at any point in the school year then applications must come directly into the school.

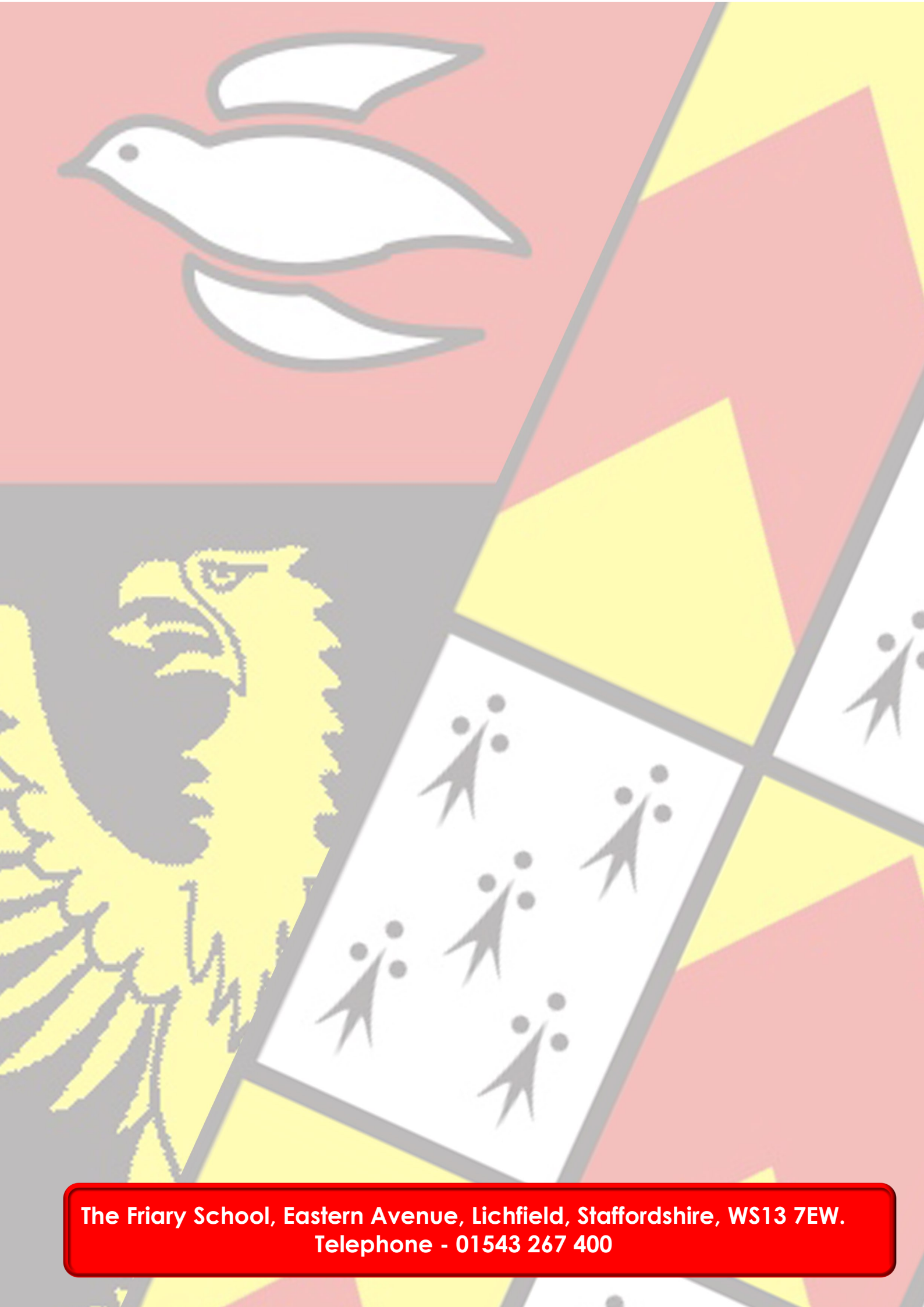
The application form is available from the Local Education Authority (LEA) via the link above. Copies of the application form are also available from the school office.

## Application Support

If you require any support in completing your application, or wish for an application to be considered then please contact the school office on 01543 267 400.

The Friary School,  
Eastern Avenue,  
Lichfield,  
Staffordshire,  
WS13 7EW.  
Telephone - 01543 267 400  
Website - [www.friaryschool.co.uk](http://www.friaryschool.co.uk)





**The Friary School, Eastern Avenue, Lichfield, Staffordshire, WS13 7EW.  
Telephone - 01543 267 400**